



## Lovers Leap Rock Climbing

Located along the South Fork of the American river, the towering cliffs of Lovers Leap have long drawn climbers to its flanks. This world class climbing area is renowned for steep and exposed climbing, yet with moderate passageways through the otherwise impenetrable cliffs. Come let us show you our favorite routes at this amazing venue. The vast majority of routes at Lovers Leap are multi pitch, and the quality of the rock is top notch. Due to the nature of the climbing here, we run small groups, with a ratio of 2:1. With most routes ranging from 1-5 pitches in length, and difficulties ranging from 5.6 on up to 5.10, there is something for everyone here!

### **Prerequisites:**

Outdoor rock climbing experience required. Lovers Leap is the perfect venue to break into multi pitch climbing for the first time. Climbers must be comfortable climbing on top rope up to 5.7 at a minimum.



All programs directed by Adrian Ballinger  
AMGA - IFMGA Certified Mountain Guide

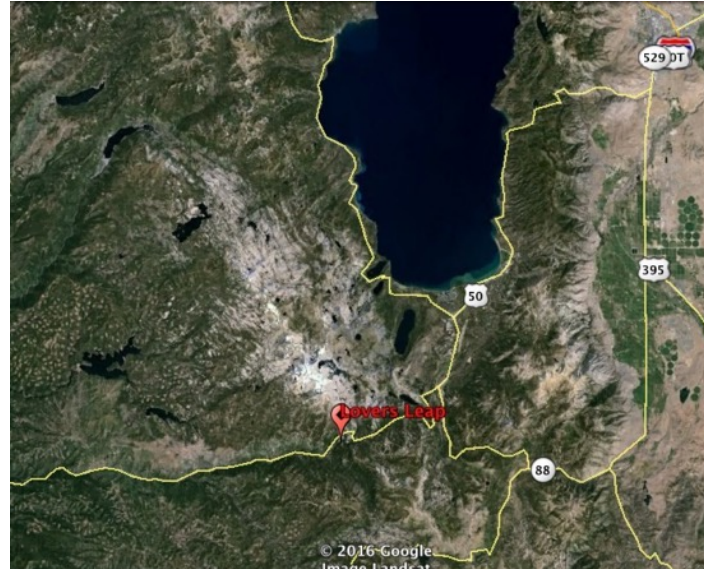


**Price:**

\$595 up to 2 people

**Location:**

Lover Leap is located on highway 50, along the South fork of the American River, near the town of Strawberry, CA. 18 miles from South Lake Tahoe, and 40 miles from Placerville, the Leap is easy to access both from the Tahoe area and from Sacramento / Bay area.



**What to bring:**

The weather can vary from cold and windy to hot and sunny. It is important that you have the proper clothing to be comfortable while climbing.

- T-shirt
- Shorts
- Light pants
- Light weight long sleeved shirt for sun protection during warm periods, or a long sleeved capilene or merino wool layer for cooler periods
- Light puffy jacket or fleece sweater
- Lightweight rain jacket
- Baseball hat or other sun hat
- Warm beanie for cooler conditions
- Sturdy hiking shoes, sticky rubber “approach” shoes recommended
- Sunscreen
- 1 liter of water
- Lunch and snacks for the day
- Camera (optional)

If you already own climbing shoes, harness, helmet, or other climbing gear, feel free to bring them along. Alpenglow provided harness, helmet and shoes free of charge if needed. If you do require climbing shoes, please state so on your application, along with your shoe size.

**Itinerary:**

- 8:00AM meeting at the Strawberry Lodge, located right on highway 50.
- 8:30-4PM- Climbing!